

# Alter Bridge - Open your eyes (chart)

## Intro

crash

fill

Musical notation for the first Intro section, measures 1-6. It starts with a 4/4 time signature, then changes to 4/4. The notation includes eighth notes and quarter notes, with 'x' marks above some notes indicating a crash cymbal. The section ends with a double bar line and a 'fill' instruction.

## Verse

6

0:13

Musical notation for the first Verse section, measures 7-9. It starts with a 4/4 time signature. The notation includes eighth notes and quarter notes. The section ends with a double bar line and repeat signs.

hihat tight

10

0:37

Musical notation for the first Verse section, measures 10-14. It starts with a 4/4 time signature. The notation includes eighth notes and quarter notes, with 'x' marks above some notes indicating a hihat. The section ends with a double bar line and a 'fill' instruction.

## Chorus

ride

15

0:53

Musical notation for the first Chorus section, measures 15-18. It starts with a 4/4 time signature. The notation includes eighth notes and quarter notes, with 'x' marks above some notes indicating a ride cymbal. The section ends with a double bar line and repeat signs.

## Intro

crash

21

fill

Musical notation for the second Intro section, measures 19-24. It starts with a 4/4 time signature. The notation includes eighth notes and quarter notes, with 'x' marks above some notes indicating a crash cymbal. The section ends with a double bar line and a 'fill' instruction.

## Verse

25

Musical notation for the second Verse section, measures 25-28. It starts with a 4/4 time signature. The notation includes eighth notes and quarter notes. The section ends with a double bar line and repeat signs.

hihat tight

29

Musical notation for the second Verse section, measures 29-33. It starts with a 4/4 time signature. The notation includes eighth notes and quarter notes, with 'x' marks above some notes indicating a hihat. The section ends with a double bar line and a 'fill' instruction.

## Chorus

ride

34

Musical notation for the second Chorus section, measures 34-37. It starts with a 4/4 time signature. The notation includes eighth notes and quarter notes, with 'x' marks above some notes indicating a ride cymbal. The section ends with a double bar line and repeat signs.

38

Musical notation for the second Chorus section, measures 38-41. It starts with a 4/4 time signature. The notation includes eighth notes and quarter notes, with 'x' marks above some notes indicating a ride cymbal. The section ends with a double bar line and a 'fill' instruction.

# Interlude

42

fill



ride

46

fill

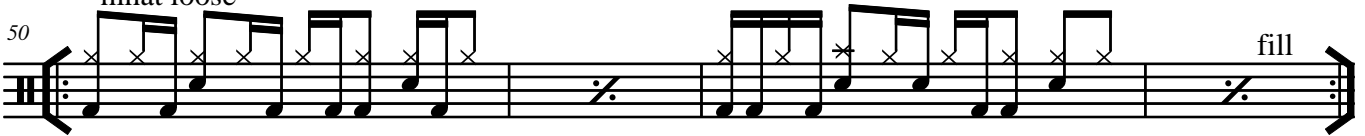
2:34



hihat loose

50

fill

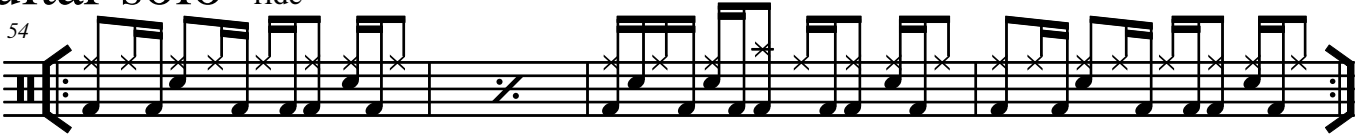


# Guitar solo

ride

54

3:09



# Chorus

ride

58



# Outro

crash

64

